

easycopy



Graphics Suite

Quick Start

New in 9.1



Focus On:

**Presentation tools
and integration**

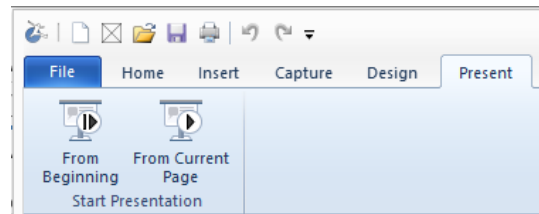
A presentation solution

Our multi-page support, which allowed presentations to be prepared inside EasyCopy before saving as PPT, now allows you to stay in EasyCopy while actually presenting.

In EasyCopy you do not need to worry about format support (seismic CGM), poor scaling capabilities (thin lines getting too thick) and the limited zooming (up to 400%) in PPT. The EasyCopy Graphics Suite continues to fill the huge gap between the main GEO and CAD applications and the standard Windows applications typically used for publishing and presentation.

Full Screen Viewer

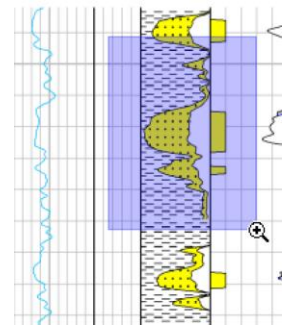
F5 is your shortcut for the slide show view, when you like to present your pages/slides without the GUI.



Alternatively, you can go to the Present tab to start your presentation. Navigate with the arrow keys or left click for the next slide and use the standard short cuts for further navigation.

Zoom and Pan

While in presenter mode (F5) your mouse cursor provide the unlimited and precise zoom tool. Focus on an exact detail by 1) drawing a zoom rubber band by left clicking and zooming out by right clicking or 2) by Ctrl + mouse wheel.



The "h" key will change your mouse cursor to the pan tool and the "z" key back to the zoom tool. For a temporary switch, hold down Shift

Call Outs

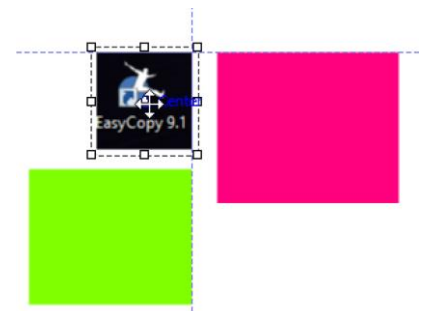


In the Home and Insert tab, you can access new drawing objects. The rounded rectangle and call outs, that you can be rounded according to your preference.



Snap and Auto Guidelines

In the Design Tab you can toggle on *Snap to Objects*. If you have *Snap Info* toggled on in the View Tab you will see Auto Guidelines assisting you positioning drawing objects and images.



Rich Text

The Call Outs and the other drawing objects can now include Rich Text. Select your Drawing object and start typing your text.

For editing go to

- 1) The **Drawing Tab**, by double clicking on your drawing object.
- 2) The **Context** menu by right clicking.
- 3) The **Edit Text...** dialog in the context menu, when you need a lot of text. You can resize the Edit Text dialog to fit the text you are typing or pasting into the text editing area.

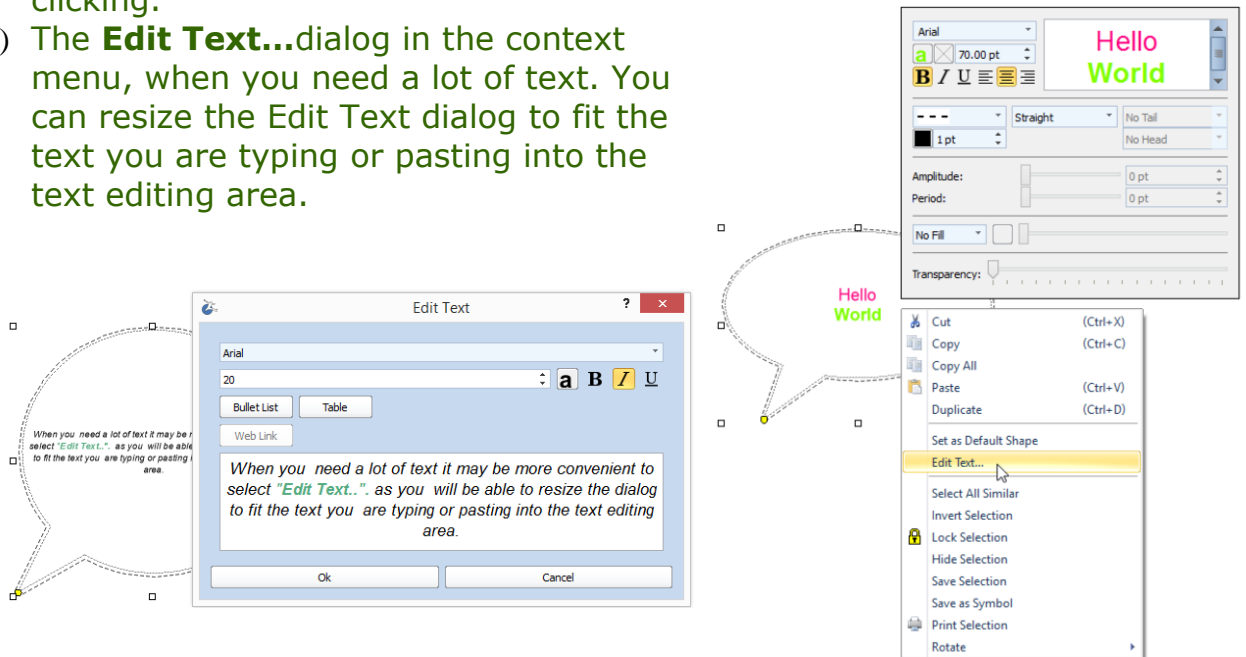
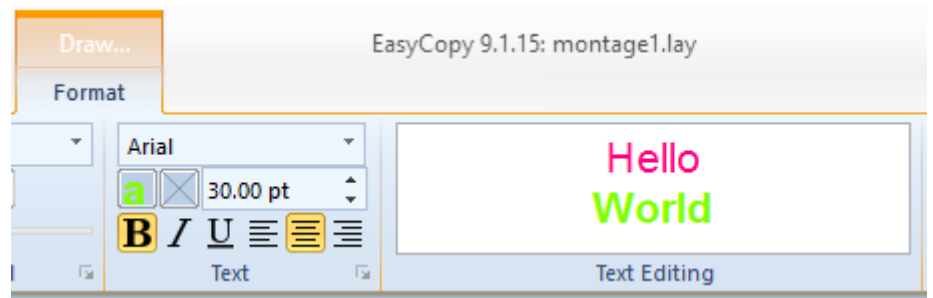
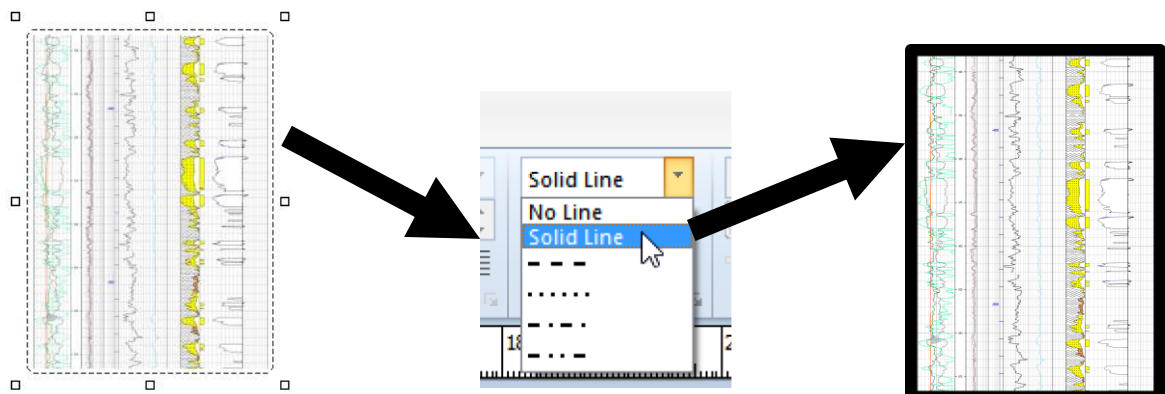


Image frames

In the Image Format tab and in the Context menu you can now easily add frames to your captures and images on your Montage or Presentation slide. Simply select your image or capture and select Solid Line in the Home tab or in the Context menu.

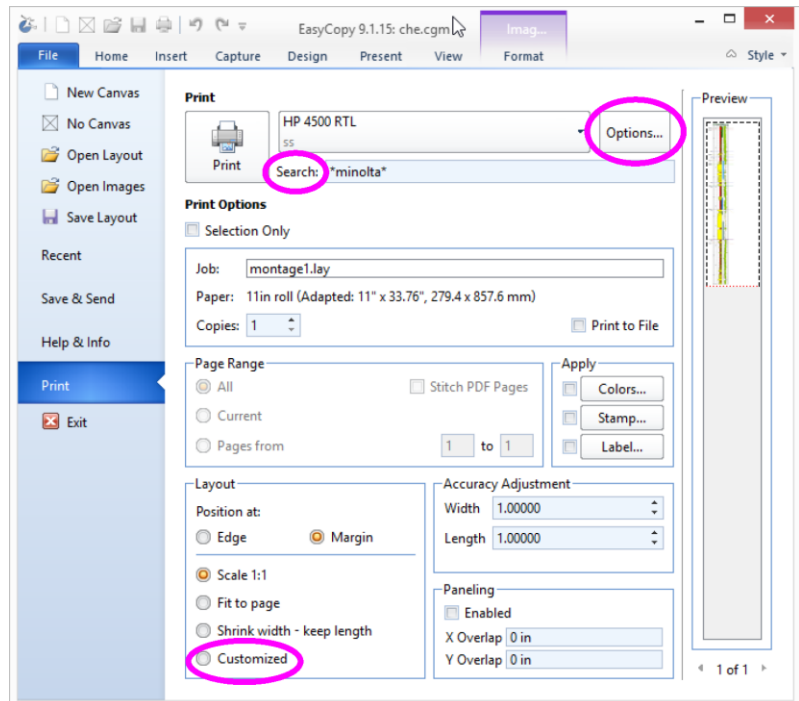


New Print Interface

We are introducing a new Windows like print interface, with the same well-known features you know from the previous version.

Setup... you will now find under **Options...**

Wildcard: You will now find next to **Search:**



To get to the **Layout** Print dialog toggle on **Customized**.

Integration on Windows

With the new vector based virtual printer driver available in Beta you can print or edit your work/file directly from Petrel and other geo applications on Windows via EasyPlot or EasyCopy.

Please request more information and we will be happy to assist you with the setup and more details about how your workflow could become even smoother

We can't wait to get you on board

EasyCopy 9.1

Your feedback is very important for us and therefore highly appreciated. Send an e-mail - write *easycopy* in the subject and mail to info@myeasycopy.com,

www.myeasycopy.com