



Quick Start



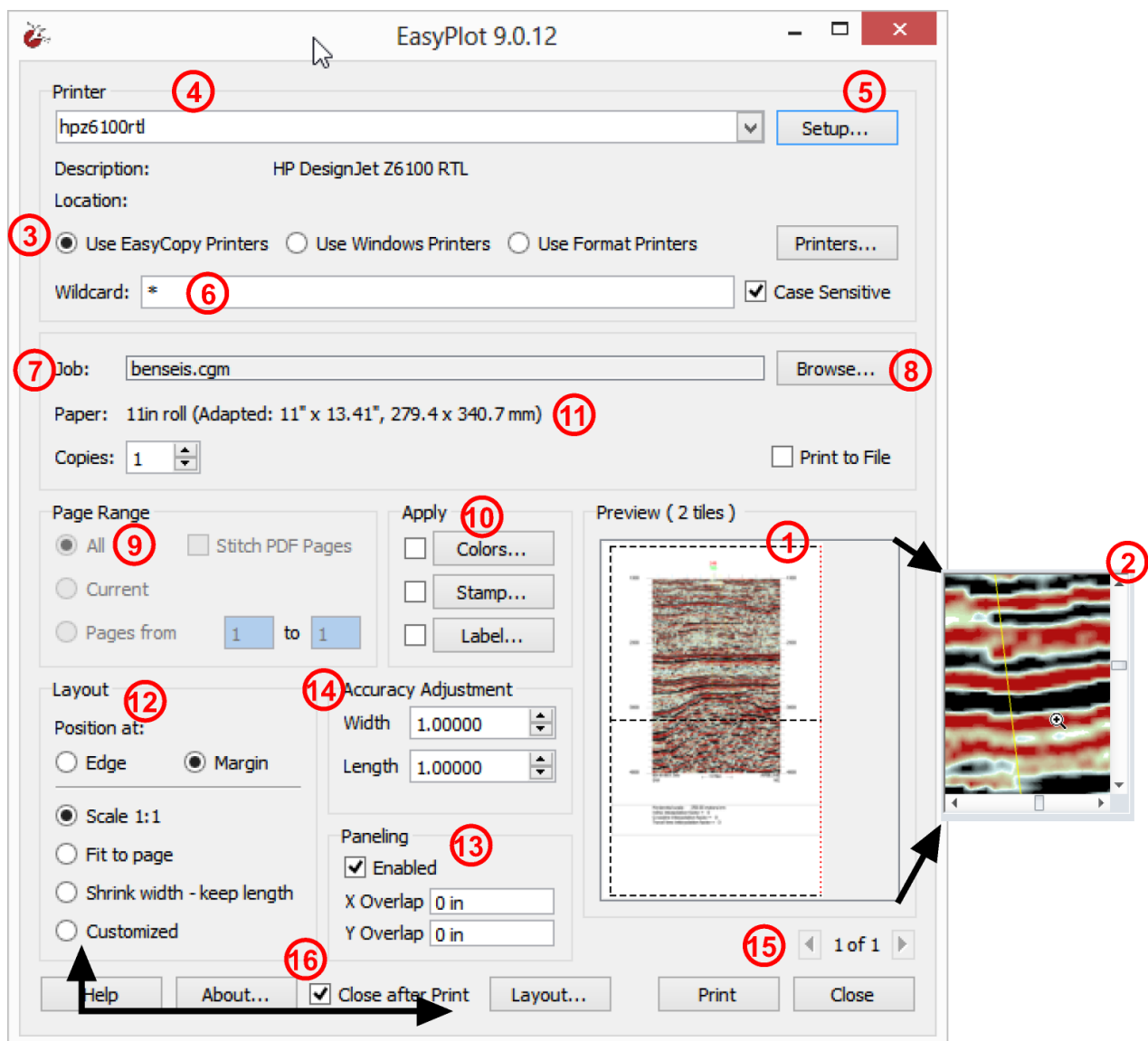
1 Printing/Plotting

EasyPlot optimizes your daily print routines. With an intuitive and user friendly interface you get flexibility and control over your prints and plots both on Linux and Windows.

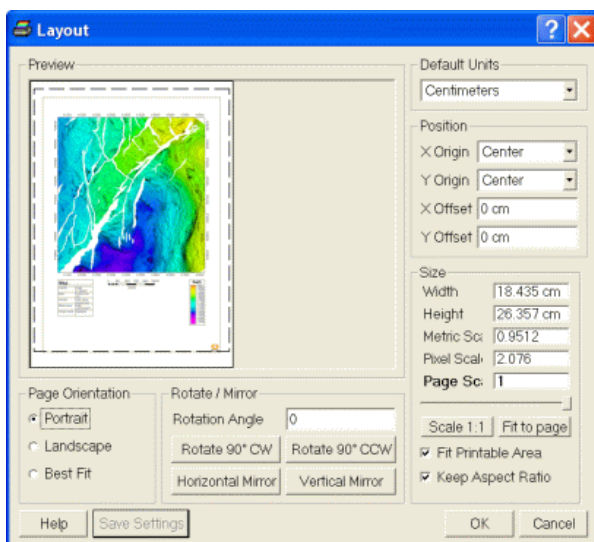
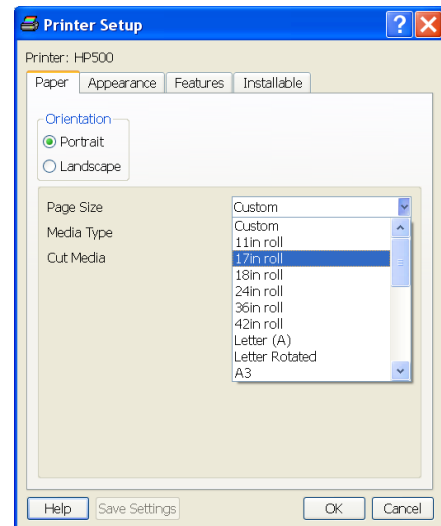
Printing 1:1 EasyPlot automatically calculate the page size. You do not have to consider the print length – you can print unlimited length.

With the WYSIWYG preview with zoom you can make sure every detail in your print comes out as expected or you can save your print job as a file.

When EasyPlot is integrated with other applications, you can print directly from your application or use EasyPlot standalone.



1. **Preview** Window. Shows what you will be printing, margins, automatic rotation, paneling..
2. **Zoom** capability using Ctrl + mouse wheel.
3. Choose between **EasyCopy Printers, Windows Printers** and **Format Printers**. For large print files, we recommend use of EasyCopy Printers for their quality and speed. For Format Printers only TIFF and PDF are multi-page formats, whereas JPEG will provide only the current page.
4. **Printer Choice**. If the printer listed is fine, continue to #5. If not, press the arrow to select the printer/plotter desired.
5. **Printer Setup**. Set or re-set specific capabilities of your printer of choice, such as paper, appearance & features. The maximum roll size of the plotter is automatically chosen as the default.
6. **Find** the right printer fast using Printer Wildcard
7. **Output Details**. The file name, paper size & number of copies are shown for your review.
8. **Browse** for a file in your system.
9. **Page Range**. Specify which pages are to be printed and here you can also toggle on/off Stitch PDF
10. **Color, Stamp, Label**. Color adjustments, Stamp and Label were discussed earlier.
11. **Adapted Page Size**. This feature is automatically enabled when 'Use EasyCopy Printers' is selected and a roll fed device is chosen. Whenever an EasyCopy printer roll device is selected the software will automatically calculate the correct paper size for plotting.



12. **Layout**. Per default the 1:1 option is selected, but you have the choice of scaling the image with the Fit to Page option or any preferred size. You can also toggle on Shrink the Width of a log file while maintaining the correct metric length.

If selecting Customized the layout dialog will appear. You are given a number of choices related to Page Orientation, Position, Size & Scale.

You may also perform rotation and mirroring at this time. If nothing else is changed the plot will start at the top left corner of the paper.

When plotting logs to fanfold paper it may be desirable to center and introduce a top offset, so that a plot will

start at a complete fold. To achieve this, use the Page Layout tool and preview how the plot will look. If necessary adjust the position.

13. **Paneling.** When this toggle is ON a plot will be paneled if the image is larger than the actual paper in the plotter/printer. An overlap can be set to make it easier to stitch the pages manually as precisely as possible. Available both for EasyCopy printers and Windows printers
14. **Accuracy Adjustment.** This is used when the plotted scale is affected by atmospheric conditions, which result in the actual plot being incorrect. The width and length values may be set to compensate for this. The values are absolute multipliers.
15. **Select page** you like to view, if more than 1 page
16. **Stay open or close after print.** If you need to print more than the file you have just printed you may like to keep the interface open, but otherwise the print interface will close when you have submitted a print job.

2 Stitch PDF Well Logs

With Stitch PDF toggled on you have the ability to concatenate multi-page PDF well logs with any white space removed. The joined log can then be printed or by selecting the Format Printer converted to for instance a TIFF file.

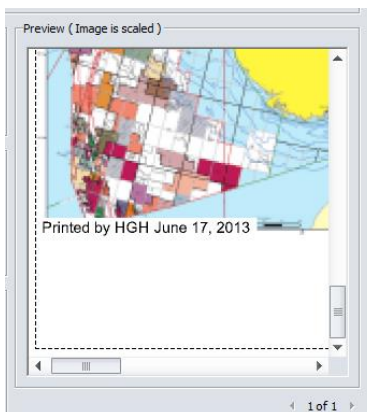
2.1 Unlimited Printing

With the EasyCopy drivers you have no limitations and even very long log files can be printed 1:1.

3 Stamp and Label

3.1 Stamp

Before you send your image or layout to the plotter, you may use either or both of the



Stamp and Label functions. You can specify a stamp or watermark to be printed diagonally across the image.

3.2 Label

A label can be positioned on the edge of the image to indicate who, what, where etc.

